



# ON DECK

## March 2026

bringing you the latest in marine and boating news





**FROM THE PRESIDENT**

## **BOATING FROM THE METROPOLITAN AREA.**

**FISHING BANNED.**

**FUEL AT LOW EBB – EXPENSIVE, AND SKY ROCKETING.**

**PENS IN SHORT SUPPLY – THOSE AVAILABLE ARE FAR FROM CHEAP.**

**HAVING TO TRAVEL FURTHER TO GO FISHING.**

We now hear this from almost all of the Boaters we speak to, that many vessels have either gone on the market and farewelled – or put in mothballs.

I am one of those – my big boat gone and my pen sold. So, a decent sized boat on a trailer (stored in my drive) seemed to be the way to go – and enables me to take the Granddaughters out for a day on the water, or a day with friends at Garden Island is (my favoured “Port of Call”) – onto my mooring and in for a swim. Garden Island Fishing and Aquatic Assoc looks after the moorings and ensures the amenity of the area for Boaters. Many thanks to our valued friends at GIFAA! Love your work!

The longest coastline in the world, Islands along it – it is the WA way of life. I have now purchased a 21 on a trailer. Pen fees gone and all associated costs gone - a little lighter on fuel and more attuned to a “retired” way of life.

Garden Island

A few people have asked (and some have told me!) that “GI has been closed to the public – Naval Waters and such” – based on article in the West Australian.

I would add - a poorly researched and untrue article. The Navy is tolerant of Boaters at the Island – provided they are well behaved and abide by the rules. Garden Island Fishing and Aquatic Assoc (GIFAA) are the “Go between” for the public and the Navy. They administer the rules and manage the moorings. This a long and respected arrangement – and Boaters “MUST” adhere to that process. Contact GIFAA if you want to head to the Island. The moorings are allocated to a GIFAA Member and 1 secondary user. They are not averse to the public using their moorings – provided they are used with respect and surrendered to the GIFAA Member should they arrive. Nothing commercial about the Island – and therein lies its beauty. Just remember to follow the rules and “Be Guided by GIFAA”

**ALONG THE COAST:**

Demersal fishing.

We see that the “protests and complaints are falling on deaf ears, and expect that will continue. RecFishWest has long proffered the logic on how to overcome this depletion to the Government but they had already instituted their ban based on their own investigations, and indications are that they will not step back from it. The strongest benefit to Boaters and Fishos along the metro coast (apart from the rejuvenation of fish stocks) will be that after the lifting of the ban – they will not have any professional Fishermen in the area. So “Improved Stocks”, and no Professionals – that is the primo outcome for Amateur Boaters.

On Facebook since the announcement there have been some tragic stories of how this will impact on Fishing Families – they are hurting with this decision. Professional Fishermen have worn a blame that is not fully

---

*Front cover photo courtesy of Paul Nicholls*

theirs – having read stats from both sides. We are well into the ban at this point. Boaters are adapting – not liking it – but adapting and focussing their efforts on other species. We see no softening of the government perspective – but we will continue to press for a more reasonable outcome for Boaters. There has to be a better solution than this! Representations continue and the voices will become louder – and hopefully at some point the Government will listen to the Fishos and Boaters of WA. Boaters are Voters! One of the suggestions has been to open up “Shark Fishing” once more and allow the apparent over abundance of sharks along our coast to be managed by the Professional Fishermen. Read RecFishWest Website – it is enlightening and realistic.

Cockburn Sound – Diminishing in value to Boaters and Fishos.

Think ahead – and much of this will happen in the very near future -:

Fremantle Harbour will transpose to Cockburn Sound and with considerable Port loading and unloading facilities along the coast.

Mooring facilities for vessels waiting to come into the Harbour, and Bunkering facilities for vessels .

The Navy Base link with AUKUS will continue to grow– and the Navy base will grow considerably with 5 new Nuclear Submarines of our own – and visits from the USA and others.

Opposite that on the coast will be shipbuilding and repair facilities to support the Naval Presence – with more coastline disappearing .

Dredging of a second channel- and the mooring depth and Harbour approach for these vessels will be around 18 metres. Current dredging (Cockburn Cement ) has battled to manage the marine environ – and stepping it up to this degree may have disastrous effects. Cockburn Sound is not very deep in places and the seagrass (Posidonia) is sparse and has required consistent maintenance to maintain it. Snapper runs and spawning are reliant on food sources in the Sound – and major dredging of much of the area will make it even more precarious.

So, Cockburn Sound will become a “Very large and denuded Harbour”. – How many boats do you see anchoring in Fremantle Harbour to go fishing???

We envisage that boats will have to travel 7ks across the sound to be on the other side or Garden Island , or trip to the North or South of Cockburn Sound before they can truly start to enjoy peace and nature once more without being asked to “move on!” Cockburn Power Boats Public Ramp is nearing capacity with some boats turned away on long weekends and holiday periods. But Cockburn ramp, along with all other facilities in the area must be “maximised” before we run out of space or capacity to add to launching facilities for our burgeoning population. Hillarys is the next coastal ramp to our north (39KMS) and it too is regularly overloaded and boats turned away!

**THE NEXT PUBLIC LAUNCHING RAMP ON THE COAST IS HILLARYS – 39 KILOMETRES DRIVE TO THE NORTH.**

CONSIDER :

- Port Coogee has no public Launching Ramp.
- Port Coogee is also in the next bay North Owen Anchorage – and is much less affected by the Navy or Harbour facilities.

The Govt has also suggested that they will “Muster fish life north into Owen anchorage “ – I will leave the joke about riding “SeaHorses “ to do so, out of the discussion.

All Ramp facilities further down the Coast seem to be in disrepair (and we are currently speaking with DTMI about this – and suggesting that Local councils are not maintaining the ramps given the increased usage by a growing population.

- Bent St Ramp Waikiki is now buried under sand and the Council have decided it is “too hard” to maintain.
- The “Canals at Point Peron” and inherent Boating Facilities will not proceed .

- The Marina at Wanliss St Rockingham will not proceed .
- Palm Beach West ramp needs a Parking Approach overhaul before it to become fully useful.
- Palm Beach Jetty – not sure what this was built for – apart from kids to jump from. It us useless to average boats.
- Bell Park on the Kwinana Beach is derelict – and poorly planned to start with
- And then Challenger Beach behind the shacks at Naval Base also is poorly planned and severely needing maintenance and improvement.

**PREPARING FOR THE FUTURE – THINKING AHEAD !!**

South Fremantle Powerhouse must enter the equation :

- Lots of Parking.
- Concrete areas at the rear that would lend themselves to boat launching/stacking.
- Amazing commercial potential.
- Derelict building with no internal floors – ‘undercover boat stacking’.
- an existing “Marina/Lagoon” that immediately lends itself to a Marina or protected launch facility
- That used to be the “Cooling Pond for the Powerhouse was around 4 metres deep when operating.
- **and then it does not become too big a stretch to put in a rock wall from the Port Coogee Marina to the Power House Marina – and you could readily have 3 very useful, and beautifully placed marinas servicing the people of western Australia .**



Conclusion :

A new and custom planned facility in Owen Anchorage would be of enormous use to the Boating Public.

Planning by DTMI and their oversight for maintenance has proven to be of great quality and well planned (as this is their prime function ) , but Council will need some assistance or direction to undertake work on jetties and ramps for which they have responsibility.

Boating Western Australia will continue to talk with councils and work toward achieving some of the goals/ improvements we have suggested above.

We will also continue to meet with DTMI (Previously Dept of Transport – Marine Safety – Regular Meetings) and make these concerns known.

**1 IN 5 WESTERN AUSTRALIANS IS INVOLVED IN BOATING IN ONE FORM OR ANOTHER!!**

- There are currently 103 thousand registered vessels in WA and a huge number that do not require to be registered.
- We have the greatest coastline and facilities in the world – and we should be able to access them

BoatingWA Looking out for the Safety and Amenity of the Boaters of Western Australia

Talk to your councils and Local Members - WE WILL BE!

Colin Lockley PRESIDENT

Boating Western Australia Inc.



**BECOME A BOATINGWA MEMBER →**

- **Yacht Grot adds a new level of service for BoatingWA Members!**

Roger and his Team at Yacht Grot have been serving BoatingWA Members (individually) for around 30 years – with every conceivable boating part and accessory.

To formalise our partnership, Roger is offering an individual discount to BoatingWA members on the production of their membership card.

It will not take the form of a set discount, as every item in stock has a different margin on it. It will be up to you to ask Roger and the Yacht Grot team – What is my BoatingWA price?

Discounts will vary on the item – but discounts are discounts, and the store that as given our members the best service and prices for this long – it will certainly be worth producing your BoatingWA Membership card.

Introduce yourself to Roger and the Yacht Grot team - and enjoy the expertise and old world values that Yacht Grot has to offer.

Roger even has an extensive amount of used antique equipment. Might not be useful on your boat, but it sure will look great in your bar!



### **Yacht Grot**

57 Queen Victoria Street, Fremantle, WA 6160

T: +61 8 9430 6766

E: [info@yachtgrot.com.au](mailto:info@yachtgrot.com.au)

<https://yachtgrot.com.au/>





# Westport Community Update

Welcome to the Westport community newsletter. We are excited to share the latest updates with you.

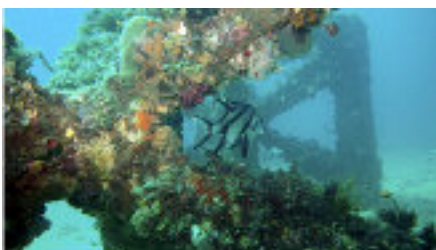
## Westport Authority: A framework for efficient, accountable and cost-effective delivery



The State Government has introduced new legislation to Parliament to establish a dedicated authority to deliver the State's future container port and supporting infrastructure in Kwinana, securing Western Australia's long-term trade future. If passed, the Westport Authority would operate as a standalone entity responsible for the planning and delivery of the future container port in Kwinana. This would support the efficient delivery of the future container port in Kwinana. The Bill does not guarantee construction, funding or final investment decisions, and it preserves the independence of the Environmental Protection Act, meaning no changes to the environmental impact assessment process.

[Read more](#)

## Results from the Artificial Reef community survey



The results are in from our community survey as part of our Artificial Reef feasibility study.

Artificial reefs are being planned as part of Westport's commitment to enhancing marine habitat and supporting biodiversity in Cockburn Sound, driven by scientific research completed through the WAMSI-Westport Marine Science Program.

Thank you to everyone who provided responses to the survey. Community input is vital to ensuring this work delivers shared value and benefits.

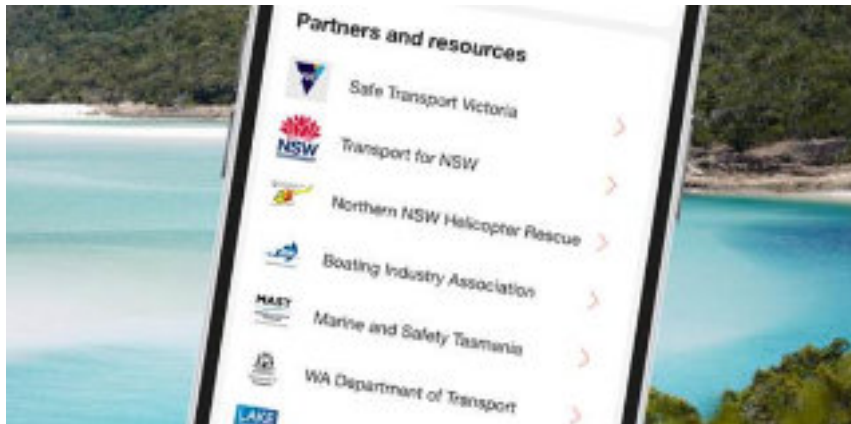
[Find out the results](#)

You can follow us on: [Facebook](#) or visit our [website](#)

for more information. If you have any questions, please email us via [enquiries@westport.wa.gov.au](mailto:enquiries@westport.wa.gov.au)



## Boating Communities



### Get our official warnings and other safety info from DECKEE

DTMI partners with DECKEE to deliver accurate safety information, real-time alerts and detail the rules and regulations to the WA boating community.

When you download and open the free app you're getting information from DTMI - the State's lead authority ensuring safer waterways.

[Download Deckee today](#)

### Take note if you use courtesy moorings



Red courtesy moorings have a four-hour time limit between 7am and 7pm and the length of vessels using them must not exceed the limit displayed on the mooring.

Courtesy moorings are provided free of charge at key locations to enhance the boating experience but users need to follow the rules to make access fair for all.

[Find out more](#)



## Make the choice: traditional flares or electronic

Flares are traditionally used in an emergency but now there are electronic alternatives.

Electronic visual distress signals or EVDS can be used in place of two red hand flares and two orange smoke flares, but you must also carry a GPS-enabled EPIRB, registered with Australian Maritime Safety Authority (AMSA).

After activating your GPS enabled EPIRB the EVDS can be used when rescue services arrive.

Be aware that from 1 September 2026 parachute flares will no longer be accepted as part of the required safety equipment for recreational vessels.

[Learn more about flares and EVDS](#)



## Not registered?

Non-registrable vessels including sailboards, kiteboards, windsurfers, paddle craft, tenders and sailing dinghies are required to carry safety equipment in certain instances.

[Get on board today](#)



## Stop and have a closer look

Just about all boat ramps contain special safety signage displaying important information relevant to local waters.

This signage offers skippers and others fantastic local insight to their launch area.

Take the time to take a closer look next time you're at the ramp. You can also consult our free series of boating guides for popular boating destinations.

[Boating guides](#)



## Take a bow

Boating Communities reaches more than 101,000 subscribers.

Thank you for being part of the WA boating community and helping keep our waterways safe. Encourage your friends and family to sign up for the Boating Community newsletter - it's free, easy and a great way to keep up with the latest in boating safety news.

Download [Deckee](#) or visit the DTMI website for the latest navigational warnings and Temporary Notices To [Mariners](#) (TNTM).



## • Exercise Transit Challenge 2026

A national maritime pollution exercise will be conducted across Canberra, Fremantle, Cockburn Sound, Garden Island, Woodman Point and surrounding coastal and port areas from 16–19 March 2026.

### About

Exercise Transit Challenge 2026 (EX TC26) is a national oil spill response exercise conducted under the National Plan for Maritime Environmental Emergencies.

The exercise will bring together the Australian Maritime Safety Authority (AMSA), the Western Australia Department of Transport and Major Infrastructure, Fremantle Ports, and partner agencies to practise responding to a simulated major marine pollution incident.

The scenario involves a simulated maritime collision offshore from Woodman Point and Garden Island resulting in a release of fuel oil and a complex pollution threat. The scenario practices coordination as the incident transitions from Commonwealth waters into Western Australian coastal and port waters.

The exercise will involve the establishment of Incident Management Teams (IMTs), deployment of marine, shoreline and wildlife response teams, and the operation of a Forward Operating Base at Jervoise Bay Sailing Club.

This is a planned and controlled preparedness activity only. No real oil or hazardous substances will be released.

### Background

Australia is a maritime trading nation and relies heavily on shipping. While large-scale marine pollution incidents are uncommon, the consequences can be significant.

The National Plan for Maritime Environmental Emergencies sets out the national arrangements for preventing and responding to maritime pollution incidents. The WA Maritime Environmental

Emergencies (MEE) State Hazard Plan aligns with these national arrangements.

Exercises like EX TC26 are essential to ensure agencies can work together effectively, test response capability and strengthen coordination across Commonwealth, state and port jurisdictions.

### Participating organisations include:

- AMSA.
- Department of Transport and Major Infrastructure (Western Australia).
- Fremantle Ports.
- Department of Biodiversity, Conservation and Attractions (Western Australia).

- Australian Marine Oil Spill Centre.
- National and State Response Team members.

### **Key messages**

- A national marine pollution exercise will occur in Canberra and Western Australia from 16–19 March 2026.
- Exercise Transit Challenge 2026 is a planned, controlled exercise — not a real marine pollution incident.
- The exercise is conducted under the National Plan for Maritime Environmental Emergencies.
- There will be no impact to community safety, the environment, cultural assets or local businesses.
- No oil or hazardous materials will be released.
- Members of the public may see increased activity in coastal and port areas, including vessels, vehicles and response personnel.
- Short-term access restrictions may be implemented in limited locations for safety reasons.
- Community members are respectfully asked not to approach exercise participants working on the beach, on the water or using response equipment.

More information is available on AMSA's website [www.amsa.gov.au](http://www.amsa.gov.au)

### **Gascoyne**

#### **Advice: Advice – Installation of Inflatable Pontoons - Coral Larval Enhancement Project, Bundegi & Mesa – Ningaloo Marine Park, Exmouth**

Mariners are advised that four inflatable pontoons - one large (4m x 4m) and one small (3m x 3m) in each area have been deployed at the following locations for coral larval collection:

- Bundegi 21° 49.880'S, 114° 10.940'E
- Mesa 21° 59.9212'S, 113° 55.0032'E

Each pontoon is marked with a yellow light flashing every 1.5 seconds.

Mariners are advised to maintain a proper lookout at all times and proceed with caution when navigating in this area.

**Chart reference:** WA900 - Exmouth

**Location:** -21: 55.6695'S 114: 3.5368'E

**Start date:** 7/3/2026

**Issued:** 4/3/2026

### **Mid West**

#### **Advice: Maintenance Dredging Works Port Denison Boat Harbour**

Mariners are advised that maintenance dredging works at Boat Pen #1 and #2 in the Port Denison Boat Harbour will be undertaken from 2 March 2026 to 22 March 2026.

Dredging operations will occur Monday to Saturday, between 0700 and 1900 hours and on Sundays between 0900 and 1900.

• **Motoryachts Unlimited – Buying | Selling | Tuition | Tailored Fees**

Pre-loved motor yacht specialists – Beautiful, professionally presented luxury boats of all brands and sizes  
3 decades in the industry and over 800 boat sales. Expertise without the sales pitch.

In the world of recreational boating, your purchase can be emotional and sometimes unnecessarily stressful. We understand that the buying or selling process can be a challenge for many and we want to do our utmost to ensure it is a pleasurable experience for all parties, after all, it is in our best interest to make sure you love boating so much that you upgrade in twelve months not twelve years! To achieve that, we need to be on the ball and professional.

Repeat business is everything to Motoryachts Unlimited and we want our customers to remain our best ambassadors.

For more info, visit <https://www.motoryachtsunlimited.com.au/our-point-of-difference/>



**BOATINGWA Member benefits**

Did you know that as a BoatingWA membership you can purchase the latest Crewfit self-inflating, slim fitting style lifejacket at a discounted price of \$75\*+ delivery if required while stocks last

Interested? Contact us at [secretary@boatingwa.com.au](mailto:secretary@boatingwa.com.au)



The works will be carried out using a Dragflow pump which will be suspended from a crane located in the car park at Port Denison Boat Harbour. The material will be pumped via submerged pipeline to the disposal location 300m south-west, adjacent to the public boat ramp.

The pipeline will run 20-30m offshore parallel to Harbour Beach, marked by yellow tri-nav markers and buoys. Due to the depth profile, there will not be sufficient clearance to launch boats from the beach.

Please note that the Dragflow pump and the disposal pipeline will be unmanned outside of normal working hours for the duration of the works.

Operators will monitor Marine VHF Channel 14

Mariners are advised to maintain a proper lookout at all times and proceed with caution when navigating in this area.

**Chart reference:** WA963 - Dongara - Port Denison

**Location:** -29: 16.4158'S 114: 55.0478'E

**Start date:** 26/2/2026

**End date:** 22/3/2026

**Issued:** 26/2/2026

### Peel

Advice: Yellow Special Marker Buoy adrift in Soldiers Cove Mandurah

Mariners are advised that a yellow Special Marker Buoy is adrift in Soldiers Cove Mandurah.

Proceed with caution when navigating in this area.

**Chart reference:** WA848 - Peel Inlet and Harvey Estuary

**Location:** -32: 32.6657'S 115: 43.2256'E

**Start date:** 10/3/2026

**Issued:** 10/3/2026

### South West

**Event: Closure of Waters to all vessels XTERRA Triathlon and closure of Old Dunsborough Boat Ramp, Dunsborough**

I Graeme Meinema, delegate of the Chief Executive Officer, acting pursuant to section 66 of the Western Australian Marine Act 1982 hereby close the following area of water to all vessels on Saturday 28 March 2026 from 6:30AM to 4:00PM.

Approximately 400 participants will be competing in the approved 2026 "XTERRA Triathlon" event. Swimmers will enter from the Old Dunsborough boat ramp heading south to Point Daking and return. The Old Dunsborough boat ramp will be closed for the duration of the event.

Area of closure; All the waters bound by a line commencing at 33° 36.060 'S, 115° 6.362'E (approximately 45 metres northeast of Old Dunsborough boat ramp) thence 75 metres in an easterly direction to approximately 33° 36.061 'S, 115° 6.410'E, thence 423 metres in a southeasterly direction to approximately 33° 36.259 'S, 115° 6.545'E, thence 180 metres in a westerly direction to approximately 33° 36.260 'S, 115° 6.428'E, thence 380 metres in a north westerly direction to the point of commencement at 33° 36.060 'S, 115° 6.362'E.

Conditions of Closure:

No vessel shall transit through, anchor or moor within the closed waters area;

This notice does not apply to approved vessels associated with the 'XTERRA Triathlon'.

**Chart reference:** WA966 - Cape Naturaliste

**Location:** -33: 36.060'S 155: 6.362'E

**Start date:** 28/3/2026

**End date:** 29/3/2026

**Issued:** 6/3/2026

**Advice: Wrack Removal and Maintenance Dredging - Port of Bunbury**

Mariners are advised that seaweed wrack removal works will be taking place in the Port of Bunbury main channel from Thursday 12 February 2026 for a 6-week period. The works will be conducted between 6:00 AM to 4:00 PM Monday to Saturday.

Maintenance dredging of the main shipping channel and Outer and Inner Harbours at the Port of Bunbury will commence Saturday 2 March 2026. Operations will be conducted 24 hours, 7 days a week and are expected to continue for a 3-week period.

Operations will be undertaken from the dredge vessel 'Modi R', plough / seabed levelling tug 'Polaris' and trawler 'Amanda Verne K'.

These vessels have equipment on the seabed and are restricted in their ability to manoeuvre.

All vessels taking part in these works will display lights and shapes in accordance with the Prevention of Collisions in State Waters Regulations 1983 at all times.

Operators will monitor Marine VHF Channel 12. Mariners are advised to navigate with caution, minimise wake and wash, and give the vessels a wide berth while operations are underway.

**Chart reference:** WA859 - Bunbury to Port Geographe

**Location:** -33: 18.480'S 115: 39.190'E

**Start date:** 12/2/2026

**End date:** 26/3/2026

**Issued:** 11/2/2026

**Swan and Canning Rivers**

**Advice: Diving Inspection Works - Fremantle Rail Bridge and Guildford Rail Bridge, Swan River**

Mariners are advised that diving operations will be undertaken at Fremantle Rail Bridge and Guildford Rail Bridge, Swan River from 17 March 2026 to 31 March 2026.

Works will be conducted Monday to Friday during daylight hours.

Access to the navigation span of the bridges will be maintained as normal and disruption will be minimal.

Works will commence at the Guildford Rail Bridge and, upon completion, will proceed to the Fremantle Rail Bridge. Each location is expected to require approximately five days to complete.

Operations will be undertaken from diving support vessel "C Y O'Connor" which will also be used as a spotter vessel to communicate with vessels as required.

The international code flag "A" will be exhibited whilst diving operations are in progress.

Operators will monitor Marine VHF Channel 16 for initial communications and VHF Channel 9 for directions and communication between operators and passing vessel traffic.

Mariners are advised to maintain a proper lookout and reduce wake while navigating through the bridges.

**Chart reference:** WA898 - Swan and Canning Rivers

**Location:** -31: 57.8298'S 115: 50.8375'E

**Start date:** 17/3/2026

**End date:** 31/3/2026

**Issued:** 13/3/2026

**Advice: Increased Air Height Clearance - Fremantle Traffic Bridge, Northern Navigational Span, Swan River**

Mariners are advised that the height restriction at the old Fremantle Traffic Bridge of 6.3m (air height) under the northern navigational span is now removed. This is due to the current Fremantle Traffic Bridge replacement works and the removal of the old roadway.

The new bridge clearance (air height) is now at 9metres above the High Astronomical Tide (HAT).

DTMI tide information is available at

<https://www.transport.wa.gov.au/marine/charts-warnings-current-conditions/coastal-data-charts/tide-predictions>

Mariners should continue to maintain a proper lookout and navigate with caution in this area until the bridge works are complete.

**Chart reference:** WA898 - Swan and Canning Rivers

**Location:** -32: 2.47'S 115: 45.27'E

**Start date:** 13/3/2026

**Issued:** 13/3/2026



**SMS**  
SPECIALISED  
MARINE  
GROUP

1800 767 737  
SALES • SPARES • SERVICE  
[www.smsperth.com.au](http://www.smsperth.com.au)

**OFFERING QUALITY AND VALUE FOR  
MARINE SALES, SPARES AND SERVICE**

**Specialised Marine Spares**  
Come and visit our new store at 7/16 Dolphin Drive,  
Mandurah! Offering a huge range of spare parts, stocking  
all major brands.  
10% discount storewide for Boating WA members\*  
\*Excludes Electronics

**Specialised Marine Sales**  
Specialised Marine Sales have been selling used vessels  
since 2012 and with over 1000 boats sold from 15ft to 76ft,  
they are the professionals for brokerage!

For the best price on selling your boat call us,  
You won't be disappointed

**PARKER** **BENNINGTON** **Latitude 32**  
FOXTOOLS

Specialised Marine Group  
7/16 Dolphin Drive, Mandurah



### DFES Marine Rescue Vessel Naming Ceremony Held at Fremantle Sailing Club

Fremantle Sailing Club was pleased to welcome the Department of Fire and Emergency Services (DFES), Marine Rescue volunteers and dignitaries to the Club on Saturday for the Marine Rescue vessel blessing and naming ceremony.

The event marked the official handover of four new Marine Rescue vessels for Cockburn, Mandurah, Whitfords and Fremantle, delivered through the State Government’s Marine Capital Grants Program. The \$5.5 million investment provides modern, WA-built vessels equipped with advanced search and rescue technology to support emergency response across some of Western Australia’s busiest waterways.

The ceremony was attended by Minister for Emergency Services, the Hon Paul Papalia CSC MLA, Fire and Emergency Services Commissioner Darren Klemm AFSM, Member for Fremantle the Hon Simone McGurk MLA, along with other local Members of Parliament, mayors and community representatives.

Fremantle Sailing Club was represented by Vice Commodore Anthony Kirke and Rear Commodore Sail Jason Sylvester, who attended as invited guests, reflecting the Club’s strong connection with the marine safety community and the many volunteers who help keep our waters safe.

FSC has long enjoyed a close relationship with DFES and local Marine Rescue groups, who perform vital work supporting the boating community across our coastline. It was a pleasure to welcome DFES, volunteers and dignitaries to the Club for the ceremony.

Members can read more about the vessel upgrades in the State Government media release [here](#).



The Garden Island Family Fun Day is coming up on Saturday 21 March, with members and their families invited to join the Power Section for a convoy to Pig Trough Bay.

Meet at the flagpole at 9am for the briefing and mooring allocation, or make your own way over and join the group on the island.

A BBQ lunch, beach games and activities for all ages will follow. Drinks are BYO.

Please register by 18 March to assist with planning. If conditions are unsuitable for Garden Island, alternative arrangements will be made.

For more information, contact Power Captain Antony at [power@fsc.com.au](mailto:power@fsc.com.au).



# HELPING MEMBERS LOVE LIFE ON THE RIVER

## Cruising in Company, 3rd-6th April

Join us this Easter Long Weekend as Swan Yacht Club members cruise together to Mandurah Offshore Fishing & Sailing Club for a relaxed Cruising in Company adventure.

Berthing is available for \$55 per night, and we're hoping to see a great fleet of Club boats make the journey south for a social weekend on the water.

Spots are limited, so if you're interested in joining the cruise please contact Nat at [marineoperations@swanyachtclub.com.au](mailto:marineoperations@swanyachtclub.com.au) to enquire and register your boat.

**CRUISING IN COMPANY**  
3-6 APRIL  
\$55 PER NIGHT

Join fellow Swan Yacht Club members for a Cruising in Company adventure this Easter Long Weekend as we head south to Mandurah Offshore Fishing & Sailing Club.

Enjoy a relaxed cruise with a fleet of Club boats, great company, and a fantastic overnight destination.

Limited Spots Available  
Contact Nat to enquire and register:  
[marineoperations@swanyachtclub.com.au](mailto:marineoperations@swanyachtclub.com.au)

**EVERY THURSDAY**  
**THE PREMIERSHIP**  
**PARMIE**

**\$20**  
- \$2 guest price

**COME FOR THE FOOTY. STAY FOR THE GIANT \$20 PARMIE!**

**ALSO AVAILABLE AS A SCHNITZ WITH GRAVY**

**2026 SYC**  
**INTRA CLUB COMP**  
**SAVE THE DATE**  
18<sup>TH</sup> & 19<sup>TH</sup> APRIL

**TARGET SPECIES**

- YELLOW TAIL KING FISH
- DOLPHIN FISH
- SILVER BREAM
- BLUEFIN TUNA
- HERRING
- SAND WHITING
- KING GEORGE WHITING
- FLATHEAD
- SQUID
- TAILOR
- PELAGIC

All Enquiries: Owain Evans  
M: 0408 096 849, E: [obioot@gmail.com](mailto:obioot@gmail.com)

more details coming soon



# MARINE & BOATING EXPERTS

Wilson Marine offers a huge range of boating and marine products along with reliable, friendly advice on all your boating requirements.

We are located in Fremantle Sailing Clubs Grounds or access from Capo D'Orlando Drive in South Fremantle.

\*Please note that some items are excluded due to low margins, ask our staff for more information.

BWA MEMBERS DISCOUNT!

**20% OFF\***

\*show your members card.

## Contact us:

[www.wilsonmarine.com.au](http://www.wilsonmarine.com.au)

**Phone: 9336 1111**

**WILSON MARINE**  
7 DAY WATERFRONT CHANDLERY



# Bunbury Yacht Club

Find us on 

EMAIL: [byc\\_365@outlook.com](mailto:byc_365@outlook.com)

MAIL: Post Office Box 1351 Bunbury 6231



## Who We Are

We are one of the oldest Yacht Clubs in Australia formed in 1882.

## Rottnest & Garden Island News

### Rottnest Island



### **Welcoming new businesses to Wadjemup/Rottnest Island**

Rottnest Island is looking for new and exciting businesses to operate on Western Australia's premier tourist destination next summer.

Rottnest Island is looking for new and exciting businesses to operate on Western Australia's premier tourist destination next summer.

Rottnest Island Authority (RIA) has released the [Recreational Expression of Interest \(EOI\)](#) to attract experienced operators to bring new businesses and recreational tourism experiences to the island next summer.

Successful proponents are granted the right to operate on the island through a trial concession arrangement, with potential for longer-term tenure.

See further information on the [EOI process and registrations of interest](#).

Applications close 4 pm WST, 24 April 2026.



New staff housing underway at Rottneest Island  
 (Photo courtesy of Ray Watson BWA Vice President)

**NEW DUFOUR 41  
AVAILABLE NOW**

**READY TO SELL?**  
GENUINE BUYERS ARE WAITING

**CONTACT US FOR A  
FREE VALUATION**

Our New Yacht brands






|   |     |
|---|-----|
| T | Y   |
| S | co. |

**THE  
YACHT  
SALES  
CO.**

Contact our WA Team:  
 David Smale: +61 417 175 186  
 Andrew Partington: +61 428 422 759

info@yachtsalesco.com  
**YACHTSALESCO.COM**

- **Rottnest Island Chamber of Commerce Event**

One of our Board Members, Stephen Knight recently represented us, over at Rottnest for the Rottnest Island Chamber of Commerce event with Minister Reece Whitby.

Events such as these are incredibly important, as they give Member of our Board interaction with Rottnest Island and their Board of Management. Hamish Beck OAM is the Chair of the Rottnest Island Authority, Hamish is a recent recipient of an Order of Australia 2025 for his services to Rottnest.

Rottnest of course is a critical venue destination for many of our Members and the Recreational Boating Public.

Stephen also had the opportunity to catch up with Walter McGuire OAM, after his Welcome to Country address. Walter recently in February was honoured by achieving an OAM as well for his services as Chair of the WA Indigenous Tourist Council which includes valuable consultation with RIA. Stephen attended school with Walter’s uncle Oral McGuire.

(Photos courtesy of Stephen Knight BWA Board Member)



*Walter McGuire OAM & Stephen Knight*



*Minister Reece Whitby*



*Stephen Knight and Hamish Beck*

## GARDEN ISLAND

### Thing to remember when entering controlled naval waters at Garden Island

Just a reminder that we are all operating in controlled naval waters and this comes with certain rules and regulations. The following are prohibited from naval waters (minimum 500 metres from the island):

Dogs and pets are not permitted on the island or within in Naval waters. Penalties Apply.

Spear fishing gear, nets and sandboards on shore or within Naval waters. Penalties Apply.

Charter boats within Naval Waters.

Drones are not permitted on the island or within naval waters.

Additional rules that apply:

Access onto the island is between sunrise and sunset only

There is a 5-knot speed limit in Herring and Pig Trough Bays

Anchoring is not permitted within 50 m of any mooring or entrance channel

Rafting of boats is not permitted

Beach BBQ'S or open fires are not permitted on the Island

Vessels greater than 13m are not permitted in Herring Bay

It is the responsibility of all members to follow the guidelines set out by the navy and to also ensure that other visitors to the island are made aware of the rules. If you witness any visitors not adhering, please say something to them in a polite manner. We have a very good relationship with the navy, and we should all work equally as hard to ensure that we are seen as contributing to governance of the island in a positive manner.

For any incidents on land, you also have the support of the Ranger, Linda Hocke who can be contacted during normal business hours on 0455 604 646. Outside of these hours you may also contact the Garden Island Security office on 9553 2273. For Emergencies, the contact number of HMAS Stirling is 9553 2222 and note that the Beach Emergency numbers (BEN) are BEN130 for Herring Bay and BEN132 for Pig Trough Bay

Website: <https://www.qifaa.com.au>

### GENERAL NEWS

#### • Abalone Closure

The state's abalone recreational fisherman, were closed out again this month (March) with the prompt closure of abalone collection. This is the fifth and final time this season the Abalone Season has been cancelled due to weather and unseasonal weather events, given the previous registered days the season was closed down as well.

There has not been any word from the WA Government about refunds on licences purchased by the public to collect abalone which could not be acted on.

The Department of Primary Industries and Regional Development (DPIRD) made the decisions to close the fishery down after completing consulting with Surf Life Saving WA and Recfishwest, based on the Hazardous Surf Assessment which uses the best available information on conditions from several sources, rating the risks for factors like wind speed, wave height, tide, swell period and direction.

DPIRD has not identified any replacement dates for the Season of Abalone take, so it appears that 2027 will be a bumper season weather permitting.

The area covered is the main fishery off Perth, between Busselton Jetty and the Greenough River Mouth.

Recfishwest has called for more understanding and options for recreational fishers for Abalone take.



*(Photo courtesy of PerthNow)*

---

- **Consultation open on proposed simplification of crabbing rules**



Media release Public consultation is now open on proposed changes to blue swimmer crab rules in the West Coast bioregion to make the rules easier to understand and to provide better fishing experiences for recreational fishers.

**Last updated: 13 March 2026**

Recreational fishers are encouraged to take part in the public consultation process to simplify rules for catching blue swimmer crabs in the West Coast bioregion.

The proposed changes would bring in one set of bag and boat limit rules from north of Kalbarri to east of Augusta.

The current closed season from the Swan and Canning rivers to Minninup Beach south of Bunbury (including the waters of all rivers and estuaries in this area) would also be extended by a month to 31 December each year.

Department of Primary Industries and Regional Development (DPIRD) Fisheries Management Officer Sara Monaghan said changing the season opening date to 1 January is being considered following feedback from recreational crab fishers who reported catching undersize crabs in December.

“Starting the season a month later will allow more crabs to moult to legal size before they are caught, helping to enhance fishing experiences,” Ms Monaghan said.

DPIRD research scientists monitor blue swimmer crab stocks across the region, including in Cockburn Sound and the Peel Harvey Estuary, and the latest science shows stocks remain at sustainable levels

Ms Monaghan said the proposal was to introduce a standardised individual bag limit of 10 crabs and a boat limit of 20 crabs (with two or more licensed fishers on board) across the entire West Coast bioregion making it easier for fishers to understand and stick to the fishing rules.

“Crabbing is a great recreational fishing experience enjoyed by many Western Australians and their families in the Swan River, Cockburn Sound, the Peel Harvey Estuary and Geographe Bay,” she said.

“Simplifying the rules for catching blue swimmer crabs will help to ensure that fishers continue to have enjoyable and sustainable recreational fishing experiences into the future.”

DPIRD community education, policy and compliance officers will be at the Mandurah Crab Fest this weekend to answer any questions on the proposed changes and the consultation process.

Ms Monaghan said all recreational fishers were encouraged to take part in the consultation process and have their say on the future rules for blue swimmer crab fishing in the West Coast bioregion.

The public consultation runs until 15 April and feedback can be made via the Have Your Say platform [yoursay.dpird.wa.gov.au/recreational-blue-swimmer-crab-management-review](https://yoursay.dpird.wa.gov.au/recreational-blue-swimmer-crab-management-review)

Feedback received through the consultation will help inform any changes to the recreational crab fishing rules for the West Coast bioregion ahead of the opening of the 2026/27 summer season.

---

## • **Committee to support reopening of recreational demersal fishing**

A new advisory committee has been established to support the reopening of boat-based recreational demersal fishing from Kalbarri to Augusta in Spring 2027.

- Advisory committee appointed to support reopening of boat-based recreational fishing for demersal fish from Kalbarri to Augusta in Spring 2027
- Recreational fishing industry, science, and conservation representatives appointed to committee
- Key focus on spawning protection, closed areas, and future recreational management arrangements

A new advisory committee has been established to support the reopening of boat-based recreational demersal fishing from Kalbarri to Augusta in Spring 2027.

The West Coast Demersal Ministerial Advisory Committee will provide recommendations to the State Government on the future management of recreational fishing to balance a return to boat-based fishing with continued protection for fish stocks to support recovery.

The advisory committee is made up of recreational fishing representatives Matt Gillett, Ashley Ramm, Jamie Chester, David Hilton, and Emma George, charter operators Michelle Howard and Cherie Abbott, and science expert Tim Langlois and conservation expert Adrian Meder. It will be chaired by Matt Gillett.

In December 2025, the Cook Government announced important reforms across Western Australia's coastline to protect demersal fish like pink snapper, red emperor, and dhufish, and to help stocks recover for future generations.

The committee, who will meet for the first time in the last week of February, has been appointed to provide recommendations to the State Government on:

- additional spawning closures to provide protection for key species including pink snapper and WA dhufish;
- locations to establish demersal recovery zones to ensure the long-term sustainability of stocks; and
- changes to recreational fishing rules, such as boat and bag limits, to support the ongoing recovery of fish stocks when boat-based fishing reopens.

Final recommendations are due to the State Government by June 2027 for consideration, ahead of the West Coast Bioregion reopening in Spring 2027.

The State Government is also continuing to work on additional State-wide changes to boat and bag limits outside of the West Coast Bioregion, which will be announced by the end of the month.

**Comments attributed to Fisheries Minister Jackie Jarvis:**

"The establishment of the West Coast Demersal Ministerial Advisory Committee is an important step towards the reopening of boat-based demersal fishing in the West Coast Bioregion next year.

"It is vital we get this right. The long-term sustainability of WA's demersal fish stocks remains a high priority to ensure we have plenty of fish for future generations to enjoy.

"The advisory committee brings together expertise from across the recreational, charter, science, and conservation sectors to work with government to help shape the future sustainable management of recreational fishing in the West Coast Bioregion."

## Swan and Canning River Parks

- **Recipients of latest Riverbank funding grants revealed**



The Cook Government has reaffirmed its commitment to protect the Swan and Canning rivers by providing significant funds for rehabilitation and revival projects.

- Local governments to share in almost \$620,000 of Riverbank grants
- Significant funds allocated to the construction of a river wall at Northbank in Fremantle
- Cook Government calls for expressions of interest in next round of funding to help restore Swan Canning Riverpark
- State Government committed to protecting and restoring the environment

# New Shoprite [Member Benefits App](#)

[shoprite.com.au](http://shoprite.com.au)

Our friends at ShopRite have developed a new member benefits mobile app to make it easier for members to access their benefits, save not only money but also time.

**The app will be replacing the cards currently sent out to members.**

You will need to create a ShopRite digital account, using your BWA member number. If you don't know your number, please contact our secretary at [secretary@boatingwa.com.au](mailto:secretary@boatingwa.com.au)

How do I create a ShopRite digital account? Its simple!

1. If you do not have an account, go to "Sign In or Register", found at the top of the page, and enter the required information.
2. Click the "Register" button at the bottom of the form to complete your registration.



## Dear BoatingWA Members ... Explore your endless discounts and benefits!



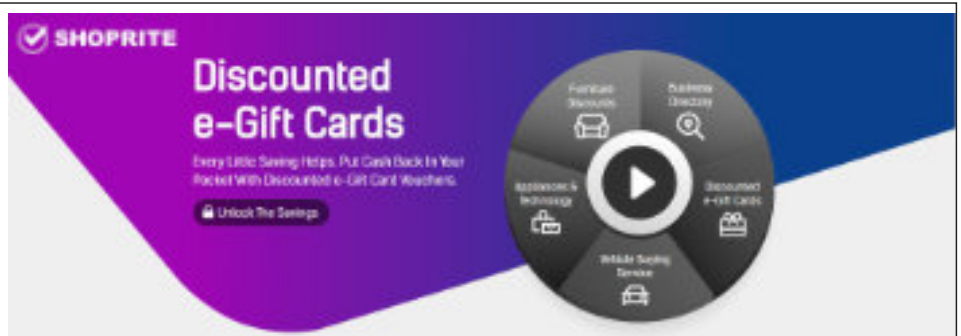
Are you aware that your BoatingWA membership gets your other great benefits outside of representing your interests and the interests of your fellow recreational boaters?

As a member of BoatingWA, you qualify to use Shoprite exclusive Benefits Service. All deals are negotiated on your behalf!

The Shoprite team have been working hard and negotiating to secure more benefits and special deals for members. Our most recent additional benefit is Discounted eGift Cards.

Here are some of the brands below:

- Woolworths
- Coles
- JB HiFi
- Retravision
- Harvey Norman
- Good Guys
- Ticketmaster
- Barbecues Galore
- BCF
- David Jones
- Ray's Outdoors
- Red Balloon
- Priceline
- Myer
- Kathmandu
- Flight Centre
- EB Games
- Endota Spa
- BWS
- Dan Murphys
- BigW and **many more.**



The Shoprite team are currently in talks with many new businesses who are most eager to join their network and offer preferential discounts to members. Watch this space!

[www.shoprite.com.au](http://www.shoprite.com.au)

The Cook Government has reaffirmed its commitment to protect the Swan and Canning rivers by providing significant funds for rehabilitation and revival projects.

As part of the latest round of Riverbank funding, almost \$620,000 will be shared by local governments in the Riverbank 2025-26 program, with more than \$321,000 going towards the construction of a river wall at Northbank in the City of Fremantle.

It is among seven projects approved for funding as part of a program to which state governments have contributed more than \$31 million for restoration projects over almost 25 years.

The ecological restoration of the Canning River in the City of Gosnells, foreshore restoration at Roley Pools Reserve in the City of Armadale and detailed designs for Hinds Reserve and Riverside Gardens in the City of Bayswater will also receive notable contributions this year.

The Cook Government is now calling for expressions of interest for the next round of funding, which opens today.

Local and State Government agencies managing land in the Swan Canning Riverpark are invited to apply. The funding applies to projects involving foreshore rehabilitation and protection activities, including revegetation, weed control and foreshore erosion management, as well as planning and design activities that support these outcomes.

Expressions of interest must be received by the Department of Biodiversity, Conservation and Attractions by 4pm, 21 April 2026. More information is available at [dbca.wa.gov.au/riverbank](https://dbca.wa.gov.au/riverbank).

The Riverbank funding program was introduced by the Gallop Labor Government in 2002 and any successful grant recipients must match State Government contributions. This has led to around \$60 million being invested at more than 370 sites along the Swan and Canning rivers.

Comments attributed to the Environment Minister Matthew Swinbourn:

"The Swan and Canning rivers are vibrant areas and home to a wide range of native plants and animals.

"The State Government has invested millions in helping to protect, rehabilitate and revive these areas through the Riverbank funding program and will continue to do so.

"These vital projects help address health and environmental issues, ensuring the Swan Canning Riverpark continues to thrive."

## News from the South West

- **New boating guide puts registration fees to good use**

Educating skippers about safety on the water is a key role of our Department and central to that work is a series of free, handy, easy to use guides for popular boating destinations throughout WA.

The brand-new Busselton to Dunsborough Boating Guide was recently published to focus on key safety information for the busiest and most popular boating locations within Geographe Bay.

Local and visiting skippers now have a dedicated guide to help them safely navigate between Busselton and Dunsborough while carrying the correct safety equipment for their area of operation. It provides detailed information for safe navigation at boat ramps and waterski areas and features the rules at Busselton Jetty highlighting the speed limits and restrictions.

Previously, Geographe Bay was included in a combined guide covering Bunbury and Busselton. The refreshed Bunbury Boating Guide now includes additional information about the Collie River and Leschenault Estuary, highlights the speed limits and reinforces personal water craft (PWC) restricted zones for the greater Bunbury area.

The Department uses funds from recreational boat registration fees to produce the boating guide series. All the guides are on our Boating guides page or available via Deckee.

It's recommended skippers download the guide for easy reference – especially when entering unfamiliar waters.



*Senior Regional Officers Michael Kent and Joshua Keys will be promoting the new guides when on patrol.*

- **DTMI has delivered another big project in the ongoing transformation of Bunbury's waterfront.**



Work to upgrade the groyne at Koombana Bay was recently completed providing the local community with a safer and higher structure that will immediately help maintain the beach and provide protection, and in time could be part of a future marina.

The previously unsafe and dilapidated groyne has been completely rebuilt with an additional 21,000 tonnes of rock.

The work on the groyne was undertaken as part of the \$69.2 million contract awarded to WA based and owned companies WA Limestone Contracting and Italia Stone Group for the construction of a new northern breakwater at nearby Casuarina Boat Harbour.

The upgraded Koombana groyne will also help to maintain the channel into Leschenault Inlet by preventing sand infill.

The project was delivered by DTMI as part of the wider \$112.2 million Stage 3.1 of the Transforming Bunbury's Waterfront initiative, led by the South West Development Commission.

View the completed work at Koombana Bay below.

For more information about TBW visit [Transforming Bunbury's Waterfront - South West Development Commission \(swdc.wa.gov.au\)](https://www.swdc.wa.gov.au)

## News from the Northwest

- **Exmouth fishers provide input early into marine park plans**

March 17, 2026



*DBCA officers recently engaging with local fishers on the proposed Exmouth Gulf Marine Park.*

Planning has formally begun for the proposed Exmouth Gulf Marine Park – and Recfishwest is pleased to see local fishers consulted early. The Department of Biodiversity, Conservation and Attractions (DBCA) kicked off the first of eight stages of their community engagement plan by recently holding... [READMORE >](#)



**USEFUL LINKS**

- **Major Projects Rottnest Island**

Click: <https://ria.wa.gov.au/major-projects>

- **Boating on Rottnest Island**

Click: <http://www.rotnestisland.com/boating>

- **Rottnest – Temporary Notice to Mariners**

<http://www.rotnestisland.com/boating/boating-information/temporary-notice-to-mariners>

- **Rottnest Marine News**

<https://mailchi.mp/rotnestisland/latest-rotnest-island-authority-marine-news?e=0a6b7000a1>

- **Garden Island Fishing and Aquatic Association GIFAA**

Click: <http://www.gifaa.com.au/>

- **TEMPORARY NOTICES TO MARINERS LINK**

*[Click Here](#)*

- **TIDE PREDICTIONS LINKS**

For general tidal predictions around WA: *[Click Here](#)*

Tide Tables for Western Australia: *[Click Here](#)*

For 2021 Fremantle tidal predictions: *[Click Here to Download](#)*

- **FSC DIVERS GROUP**

This is a page to showcase the comings, goings and doings of the Dive Section at Fremantle Sailing Club.  
More info: *[Click Here](#)*

- **BOATING COMMUNITIES NEWSLETTER**

Stay up to date with the latest news relating to recreational boating in Western Australia through the Department of Transport’s Boating Communities Newsletter. *[CLICK HERE](#)*

**Other useful links**

ShopRite – <http://www.shoprite.com.au/>

River Guardians – <http://www.riverguardians.com/>

Fremantle Sailing Club News – <http://www.fsc.com.au/home/latest-news-information/>

Swan Yacht Club News – <http://www.swanyachtclub.com.au/news/>

Bunbury Yacht Club: <https://www.facebook.com/p/Bunbury-Yacht-Club-100067325569262/>

Perth Game Fishing Club News – <http://www.pgfc.com.au/news>



**recfishwest**

fish today for tomorrow

**Contact Us**

**Boating Western Australia (Inc.)**

**PO Box 692**

**SOUTH FREMANTLE**

**WA 6162**

[www.boatingwa.com.au](http://www.boatingwa.com.au)

[secretary@boatingwa.com.au](mailto:secretary@boatingwa.com.au)

Find us on 